

SUPER-DNC

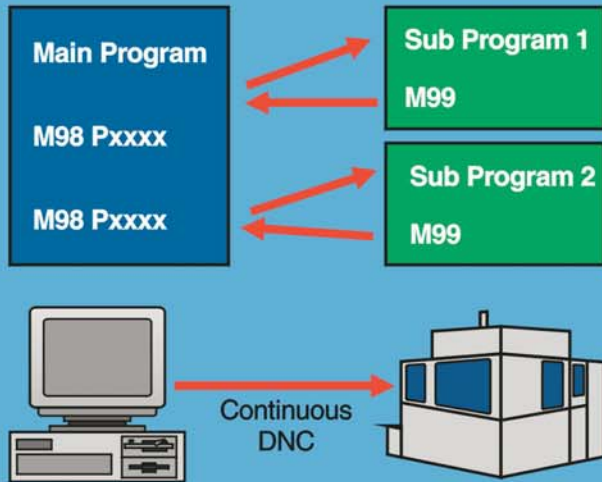
the advanced precision / mould
industry solution



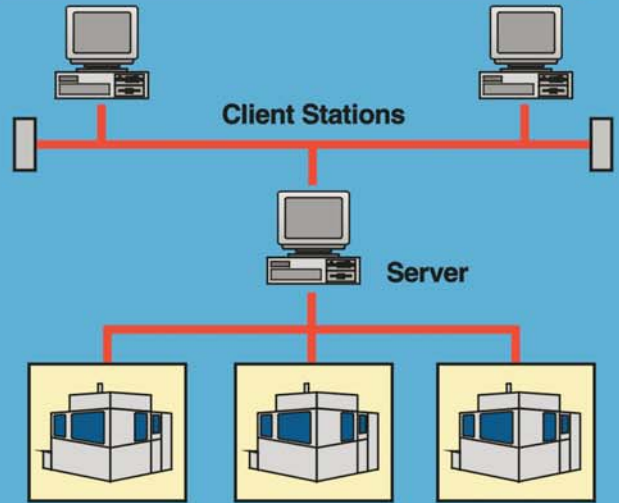
SUPER-DNC brings modernisation to your machine shop floor. In all of today's precision engineering/mould making factories, NC programs are the most precious assets besides the machines. **SUPER-DNC** provides you the most efficient solution to safeguard your investment. **SUPER-DNC** solves your daily manufacturing problems, thus achieving higher productivity and efficiency.

STANDARD FEATURES OF SUPER-DNC SYSTEM

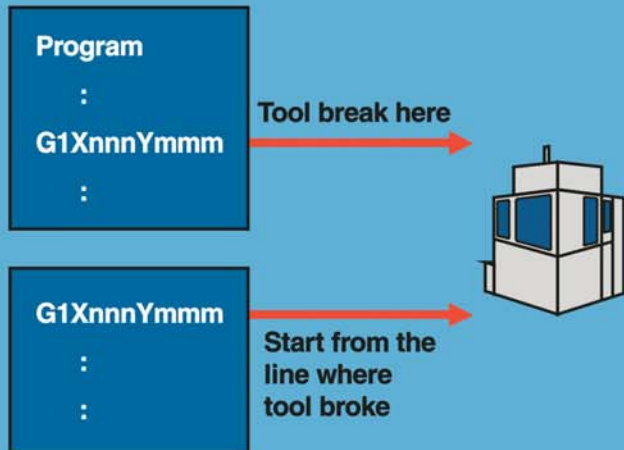
SUB PROGRAM CALL



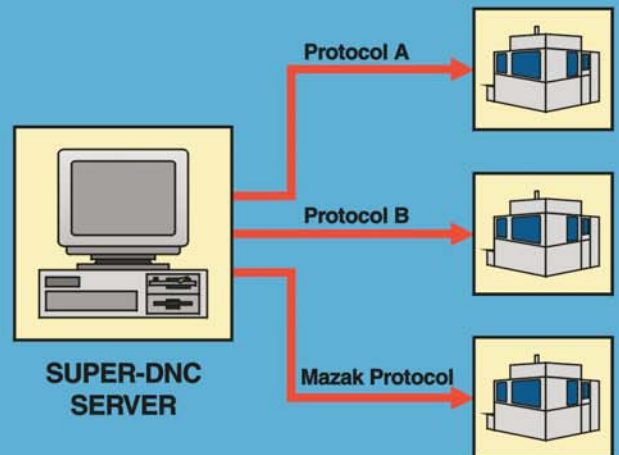
CLIENT-SERVER CONFIGURATION



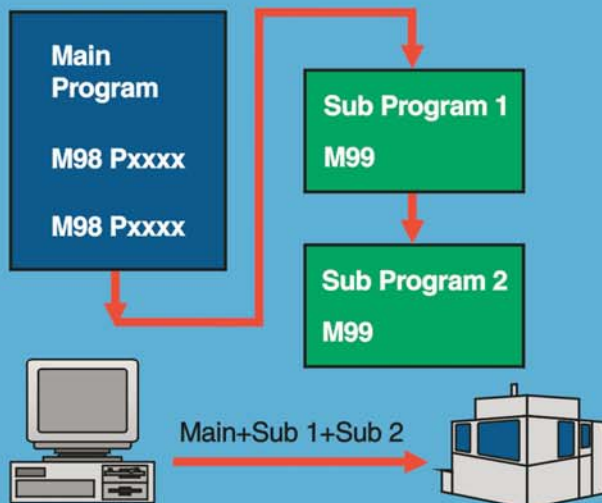
Start cutting from any program line



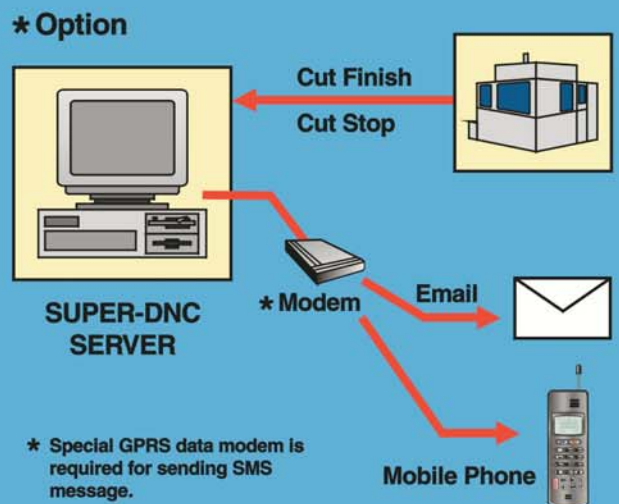
Special Protocols for CNC Machines



Auto-Search for sub programs and send to machine



Notify user for events such as cutting finish

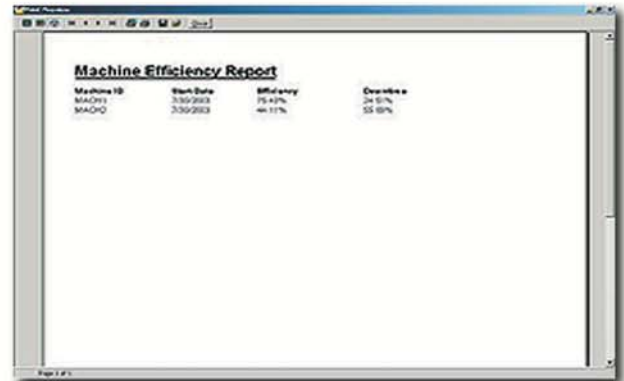
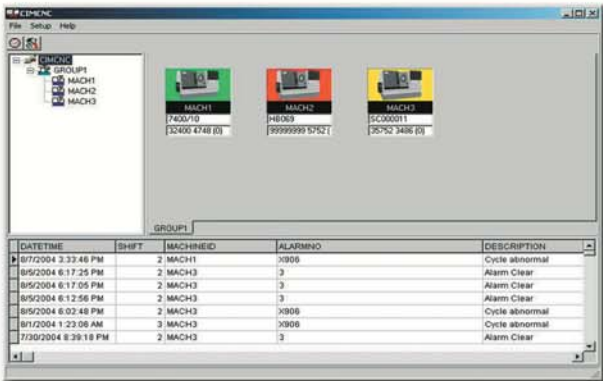
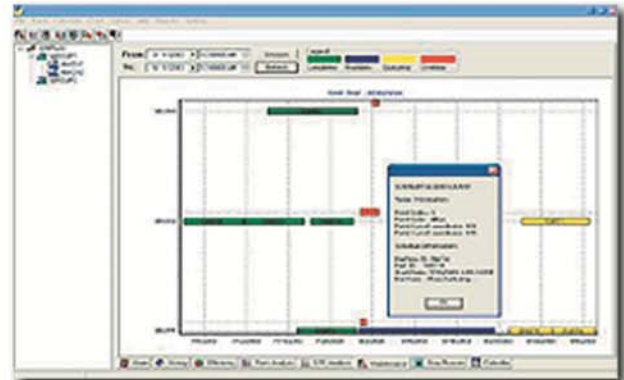


COMPANION PRODUCTS

CIMCNC OPTION

Centralized Management Control System Linking CNC Machine Factory.

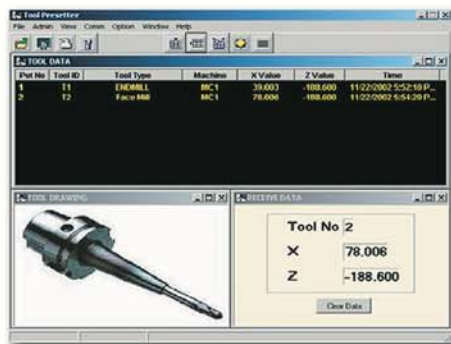
- Help customer to track machine utilization, machine efficiency, cycle efficiency, machining progress, machine stop reasons and other critical production factors.



TOOL PRESETTER SOFTWARE OPTION

Tool Presetter Software Linking Tool Presetter to CNC machines.

- To help customer to prevent typing error when input X and Z value. To alert customer of abnormal value which exceeds the preset tolerance.



CNC EDITOR & BACKPLOT OPTION

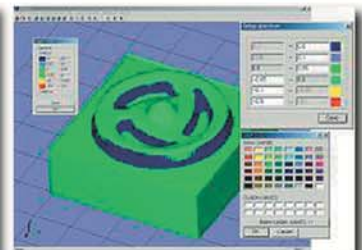
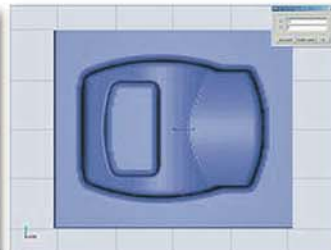
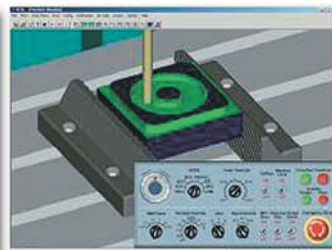
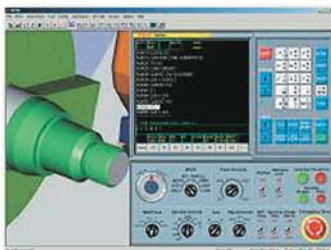
CNC Editor & Tool Path Simulation.

- To help user to create CNC program and verify the tool path of CNC program.
- To avoid trial cutting error.



V-CNC OPTION

3D Solid CNC Simulation Software for education and technical training purposes. The software includes virtual machine and virtual controller (Fanuc and Siemens)

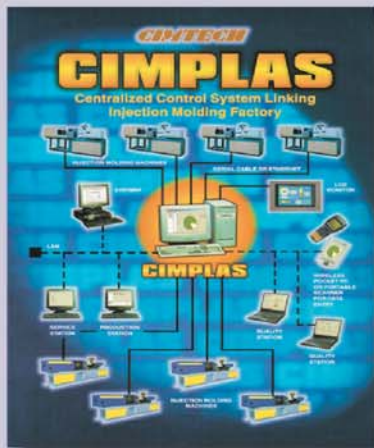


SUPER-DNC SPECIFICATION

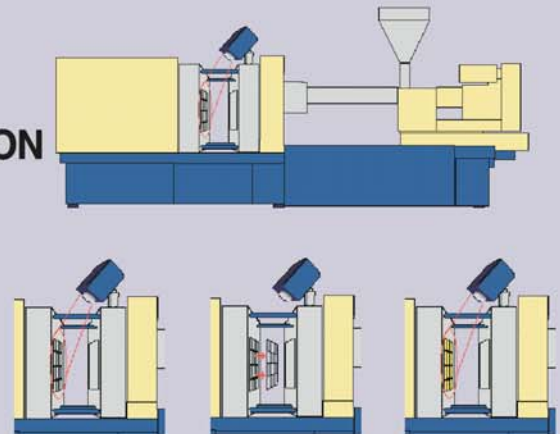
Computer Configuration	Operating System	Windows XP, Windows 2000/2003, Windows NT or Windows 9x
	Hardware	Pentium III PC or above
	Memory	256 Mbyte and above
Communication	Transfer Speed	Standard : 2 machines simultaneously at 38400 bps and 6 machines simultaneously at 19200 bps. Option 1 : 8 machines simultaneously at 38400 bps.
	CAM System Linkage	Maximum 100 meter using CAT5 wire (Ethernet network), wireless (802.11b)
	Protocol	Reader/Puncher Interface Protocol, Protocol A, Protocol B, Mazatrol, Heidenhain
	Transmission Medium	Standard : RS232C (9600bps at 15m or less) Option 1 : RS422C (19200bps at 1.2km or less) Option 2 : Optical Fibre (19200bps at 2km or less) Option 3 : Wireless (802.11b)
Data Management	NC Program	Managed using part number, part name, project name, project number and customer name.
	Tooling Data	Tool number and its description is generated automatically.
File Usage Log	PC → CNC	Information such as duration of cutting, finishing time of cutting, program name and machine name are recorded.
	CNC → PC	same as above
Compatibility	Machines brand	Okuma, Makino, Mori-Seiki, Cincinnati Milacron, Deckel, Toshiba, Kiwa, Takesawa, Wasino, Mazak, Hitachi-Seiki, Brother, Hurco and others.
	CNC brand	Okuma, Fanuc, Tosnuc, Mazak, Heidenhain, Deckel, Cincinnati Milacron, Mitsubishi, Siemens, Maho, Yasnuc.
File Operation	Create, edit and delete NC program	Editor is present to edit, create new CNC program. Come with features like block copy, move, delete, find and replace function.
	Hardcopy	Printout of CNC program
	Program Comparison	Compare two different CNC program from same or different machines.
Maintenance	Data Backup	Optional backup drive is used to save all CNC programs in 100 Mbyte disk or 1 Giga byte disk.

OTHER PRODUCTS

CIMPLAS



CIMEYE - MOULD PROTECTION SYSTEM



Authorised Agent:

CIMTech Automation Consultant

51 Bukit Batok Crescent #06-34 Unity Centre Singapore 658077
 Tel: (65) 67789973, (65) 63163405 Fax: (65) 67783860
 Email : sales@cimtech-automation.com
 URL : www.cimtech-automation.com