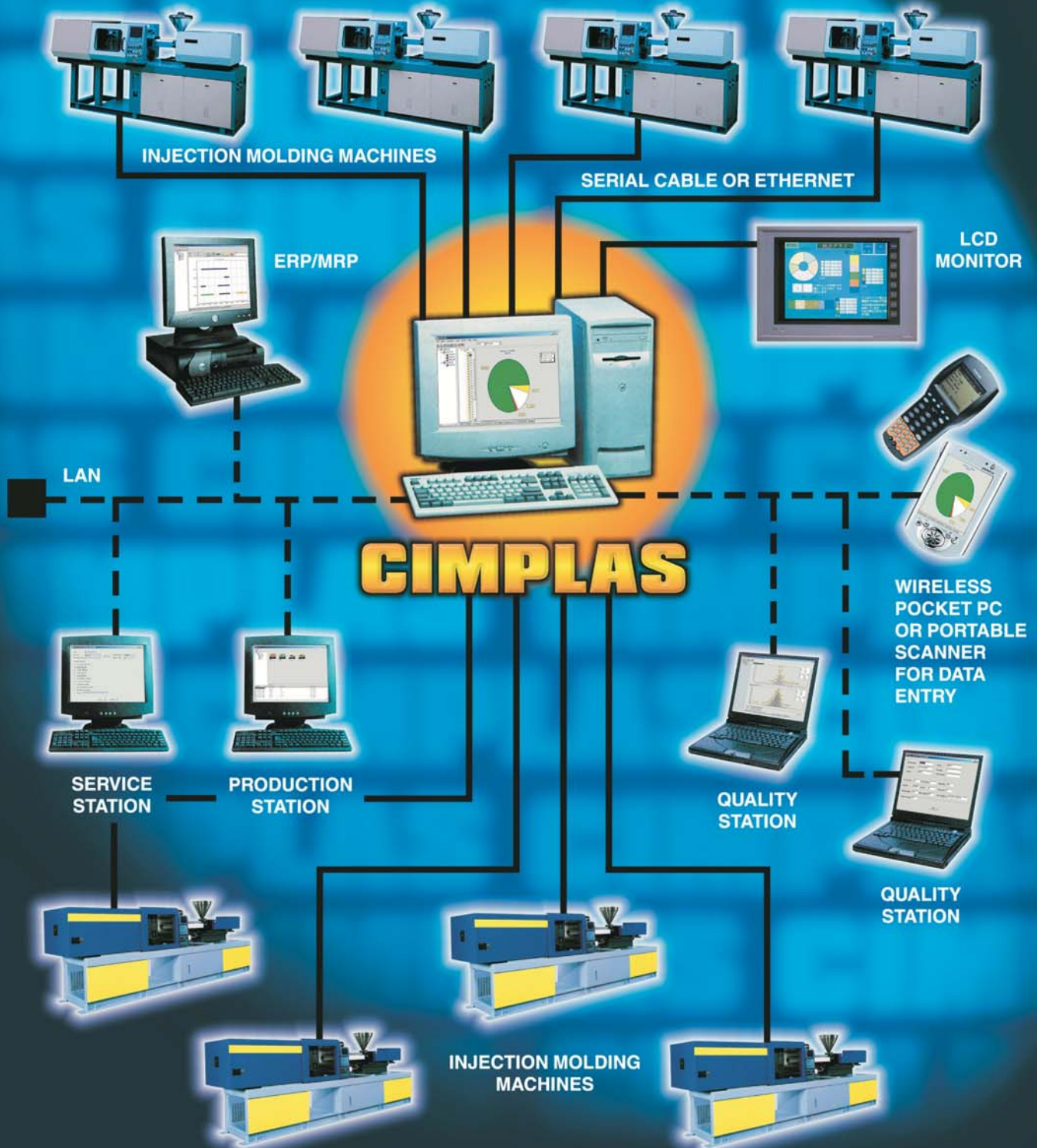


CIMPLAS

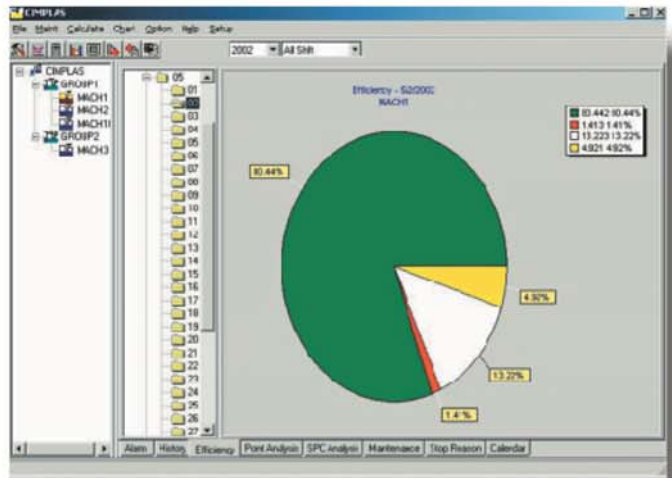
Centralized Control System Linking
Injection Molding Factory



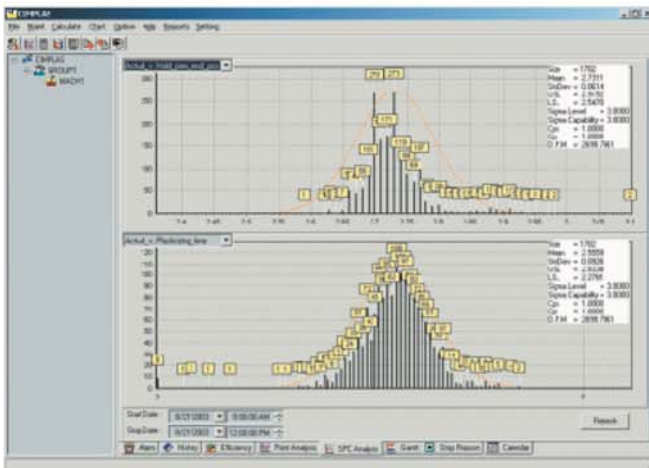
CIMPLAS MAKES POSSIBLE THE FLOW OF REAL-TIME INFORMATION FROM VARIOUS PLASTIC MACHINERIES IN FACTORY TO MANY DEPARTMENTS SUCH AS QUALITY, PRODUCTION, MAINTENANCE, SALES AND CUSTOMER.

Process Detail Screen displays the details of job of each machine such as target, good part, bad part, estimated time of completion.

Machine Efficiency Screen displays the machine run time, machine stop time, machine alarm time and machine idle time in easy to read charts.

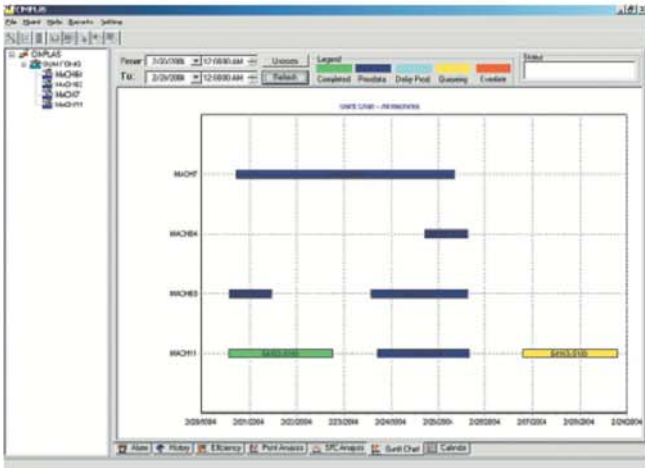


SPC Screen displays the mean, standard deviation, variance, D.P.M. and other SPC data on all process data from each machine.



Production Status Screen displays the current job performed by the each group of the machine. The machines can be grouped into different sections according to their functions or locations.

DATE TIME	NAME	IMP. NUMBER	ALARM NO.	SUBSHELF NAME
2013/08/14 8:10:37 AM	1 MACH 13	3		Warn Clear
2013/08/14 8:10:37 AM	1 MACH 13	3	AB	Alarm Occured
2013/08/14 8:10:26 AM	1 MACH 7	2		Warn Clear
2013/08/14 8:10:06 AM	1 MACH 7	2	UBNRS	Alarm Occured
2013/08/14 8:07:21 AM	1 MACH 7	3		Warn Clear
2013/08/14 8:07:14 AM	1 MACH 7	3	UBNRS	Alarm Occured
2013/08/14 8:06:39 AM	1 MACH 7	3		Warn Clear



GANTT Chart Screen displays the current job, finished job and queued job for each machine in the factory. User can zoom in to certain job to check the machine non-productive time period.

Mold Maintenance History Screen prompts user to enter repair reasons for mold that is due for maintenance. Mold Maintenance History Report can be printed later for analysis purpose.

CIMPLAS SYSTEM

S/N	PROBLEMS	SOLUTION
1	How long does it take for an operator to attend to an alarmed machine?	The CIMPLAS System will be able to alert the user immediately when the machine stop or alarm. The user may require entering the stop reason for the machine.
2	How to do preventative maintenance for the machine and the mold at the right time?	The CIMPLAS System will be able to alert the user to perform maintenance job after the actual shots in a machine exceeds the preset shots for the mold or the planned machine maintenance is reached.
3	How to enter stop reasons and start/stop a job for every machine in the factory?	The CIMPLAS System allows user to input stop reasons and start/stop a job using pocket pc with wireless network capability. This allows user to be mobile and moving around in the factory.
4	How long does the operator take to start the plastic machine in each shift?	The CIMPLAS System stores mold configuration data that is used to produce a part. The mold configuration data is stored in database, hence starting a machine becomes easy. (Option)
5	How to know and analyze the utilization for each plastic machine for the estimation of the company profitability?	The CIMPLAS System will display charts showing the machine utilization for each plastic machine for a period of time.
6	How to know the downtime for each machine?	Machine downtime is displayed on the machine utilization chart.
7	How to interface production data to a financial management system?	The CIMPLAS System stores data in ODBC-enabled database so interfacing of this data to any third party financial software becomes easy. User can use a third party report generator to create customized report.
8	How to manage the production effectively and understand the production in other countries?	The CIMPLAS System collects production data automatically and allows management to obtain the production data remotely from anywhere in the world. This helps the management to make production decision promptly.
9	How to utilize the resources such as machines and operators effectively?	With the CIMPLAS System, the management can access the actual production data and results to plan for the effective use of resources.

GENERAL SPECIFICATION

S/N	ITEM	DESCRIPTION
1	COMPUTER CONFIGURATION (MINIMUM)	CPU: PENTIUM IV 2.0 GHz AND ABOVE MEMORY: 512 MBYTE RAM HARD DISK: 120 GIGA BYTES AND ABOVE OPTIONAL BACKUP HARD DISK: 120 GIGA BYTE AND ABOVE MONITOR: 17" SVGA MONITOR OR ABOVE CD-ROM DRIVE: 20X CD-ROM DRIVE OR ABOVE OPTIONAL PRINTER: USB OR PARALLEL PORT
2	OPERATING SYSTEM	WINDOWS 2000, WINDOWS XP PROFESSIONAL
3	PORTABLE DEVICES	PORTABLE HAND HELD SCANNER OR POCKET PC WITH WINDOWS CE
4	TRANSMISSION MEDIUM	SERIAL CABLE OR OPTICAL FIBRE OR ETHERNET CABLE
5	CONTROLLER TYPE	NISSEI NC9000G, NISSEI NC9300T, SUMITOMO (SHC & SES Series) ENGEL EC88A02, ENGEL EC100A02, ENGEL EC100A03, TOYO, SODICK, JSW, ARBURG AND OTHERS
6	MACHINE TYPE	NISSEI, SUMITOMO SES SERIES (SE30S, SE50S, SE75S, SE100S, SE180S, SE280S, SE350S) SUMITOMO SHC SERIES (SH100C, SH130C, SH160C, SH220C, SH280C, SH350C), ENGEL, TOYO, SODICK, JSW, ARBURG AND OTHERS
7	*PROCESS DATA (WITH MACHINE IO CARD)	SHOT COUNTER, REJECT COUNTER, CLAMPING FORCE, INJECTION TIME, CYCLE TIME, PLASTICIZING TIME, CUSHION TIME, METERING STROKE, TEMPERATURE AT VARIOUS ZONE (NOZZLE, FRONT, MIDDLE, REAR), OIL TEMPERATURE, CAVITY PRESSURE, HOLDING PRESSURE, BACK PRESSURE, COOLING TIME, MOLD OPEN TIME, MODES OF OPERATION (AUTO, STOP, ALARM, OFF) ALARM, STOP REASON, PART COUNTER, CAVITY NUMBER, MOLD NUMBER, ORDER NUMBER, JOB NUMBER
8	PROCESS DATA (WITHOUT MACHINE IO CARD)	SHOT COUNTER, TOTAL PART COUNT, CYCLE TIME, RUNTIME, DOWNTIME, **GOOD PART COUNT, **BAD PART COUNT, **ON_HOLD PART COUNT

*THE NUMBER OF PROCESS DATA THAT CAN BE AUTOMATICALLY COLLECTED FROM PLASTIC MACHINES DIFFERS WITH VARIOUS MODELS AND MAKERS. PLEASE CONTACT OUR TECHNICAL CONSULTANT FOR MORE INFORMATION.

**THESE VALUES ARE ENTERED MANUALLY BY PRODUCTION PERSONNEL

OTHER PRODUCTS

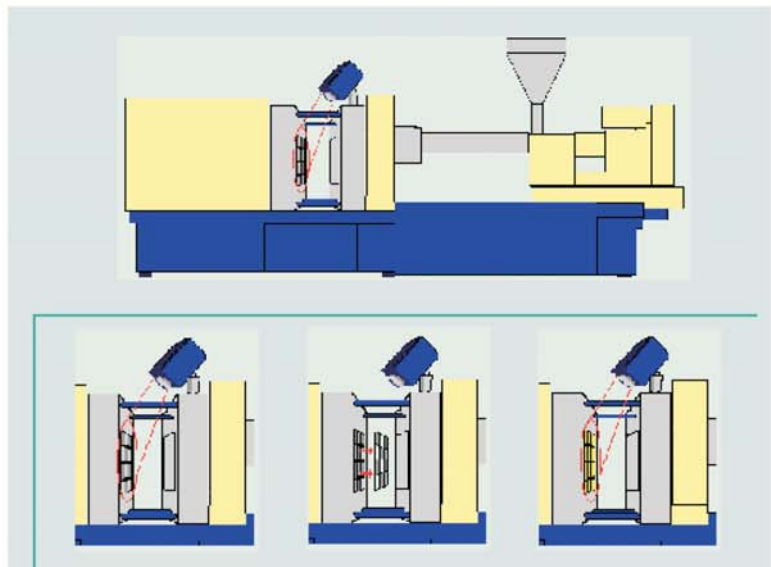
SUPER DNC

SUPER-DNC
the advanced precision/mould industry solution

LATHE LATHE LATHE LATHE
OPTICAL FIBRE OR SERIAL CABLE
MACHINING CENTRE SUPER-DNC OTHER SUPER-DNC SYSTEM
MACHINING CENTRE MACHINING CENTRE CAD/CAM

SUPER-DNC brings modernisation to your machine shop floor. In all of today's precision engineering/mould making businesses, CNC programs and the mould production system control the machines. SUPER-DNC provides you the most efficient system to support your investment. SUPER-DNC solves your daily manufacturing problems, thus achieving higher productivity and efficiency.

CIMEYE - MOLD PROTECTION SYSTEM



CIMTECH AUTOMATION CONSULTANT

51 Bukit Batok Crescent #06-34
Unity Centre Singapore 658077
TEL: 65.67789973 FAX: 65.67783860
Email: sales@cimtech-automation.com

Authorised Agent: